

# *AnyRay*

*Portable Intra-Oral X-Ray*



# AnyRay - Wireless Portable X-Ray

*Best choice for dental imaging with mobility*

“The most convenient portable X-ray combined with a rechargeable battery.”

## AnyRay

- Portable, wireless operation perfected – just point and shoot
- Rechargeable battery provides more than 100 exposures per charge
- Eliminates traditional space and movement restrictions
- Compact, light design facilitates easy handling
- LED display for clear indication of operation
- Compatible with both film-based and digital imaging systems
- Simple “one touch” control for easy operation
- DC high frequency circuitry for high quality, low dose imaging
- Range of time selection : 0.03 sec to 2.0 sec
- High total filtration : 2 mm Al
- Displays remaining available exposures

## Portable type

Without the physical constraints of space and movement, AnyRay provides unrestricted use within the dental clinic.

## Chair/Wall type


Conventional wall or chair mounting options allow perfect diagnosis.

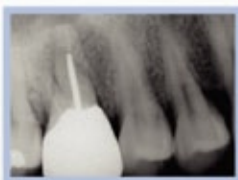


AnyRay

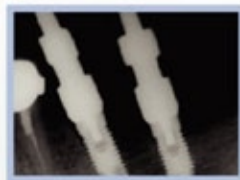


▶ LCD display

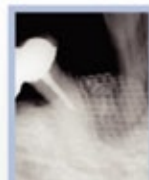
 Convenient use for dental surgery



▶ Endodontic treatment



▶ Implant surgery



▶ Nerve treatment



▶ Nerve treatment

Distributed exclusively by


**Canadian Imaging.ca**  
 Diagnostic imaging for a brighter future

## Specifications

Dimension	197 X 151 X 77mm
Generator Type	DC High Frequency
Input Power Supply	Rechargeable Battery
Focal Spot	0.8mm
Tube Voltage	60kV
Anode Current	2mA
Stability	Under $\pm 10\%$
Operation Time	0.03~2 sec
Total Filtration	2mmAl
Output Radiation Field	$\varnothing$ 6.5mm at SID 200mm
Weight	2.6 kg

